

# Installation manual

## FYN Retail



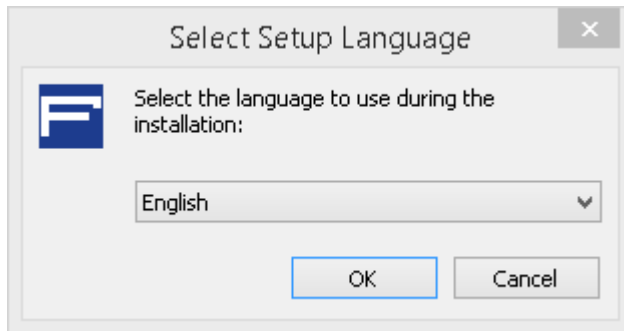
# Contents

Step 1 : Installation .....	3
Step 1.1 : Setup Language.....	3
Step 1.2 : Settings .....	4
Step 1.3 : Choose an installation folder .....	6
Step 1.4 : Completing installation.....	7
Step 2 : First start-up.....	9
Step 2.2 : First setup .....	9

## Step 1 : Installation

### Step 1.1 : Setup Language

Choose a language that the setup will use during the installation and press OK. This also influences the language FYN Retail will start with the first run.



*Picture of the language selection screen*

## Step 1.2 : Settings

The screenshot shows a window titled "Setup - FYN Retail" with a "Settings" section. The settings are as follows:

Field	Value
<b>Serial number:</b>	AX6VvUb4QTpK6Wmcp64KizvxIROQEQquMhPsrHwL/Au
<b>Company identification:</b>	9997
Company location:	1
Terminal identification:	Cash register 1
NTP Server:	
Username:	
Password:	

At the bottom right of the window, there are two buttons: "Next >" and "Cancel".

*Picture of the Settings screen*

You only need to fill in the fields with the bold text, all other fields are optional.

### **Serial number**

Fill in the serial number you got from FYN.

### **Company identification**

Fill in the company number you got from FYN.

### **Company location**

The location number you got from FYN otherwise just leave at the given number.

### **Terminal identification**

The name of the terminal that you will be using. This can be made up.

### **NTP Server**

Leave this field empty unless your provider blocks NTP requests.

### **Username**

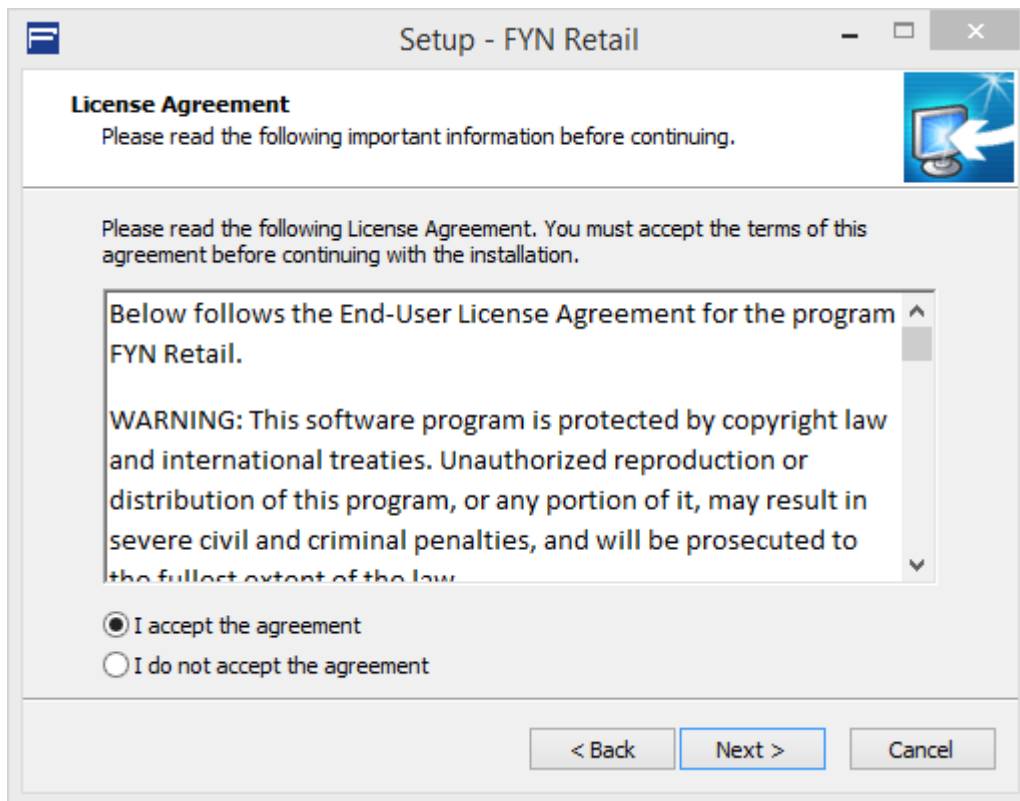
Leave this field and the Password field empty if you want the program to start without needing to fill in a username and password, otherwise fill in a username.

### **Password**

Leave this field and the Username field empty if you want the program to start without needing to fill in a username and password, otherwise fill in a Password.

If you filled in the needed information press next.

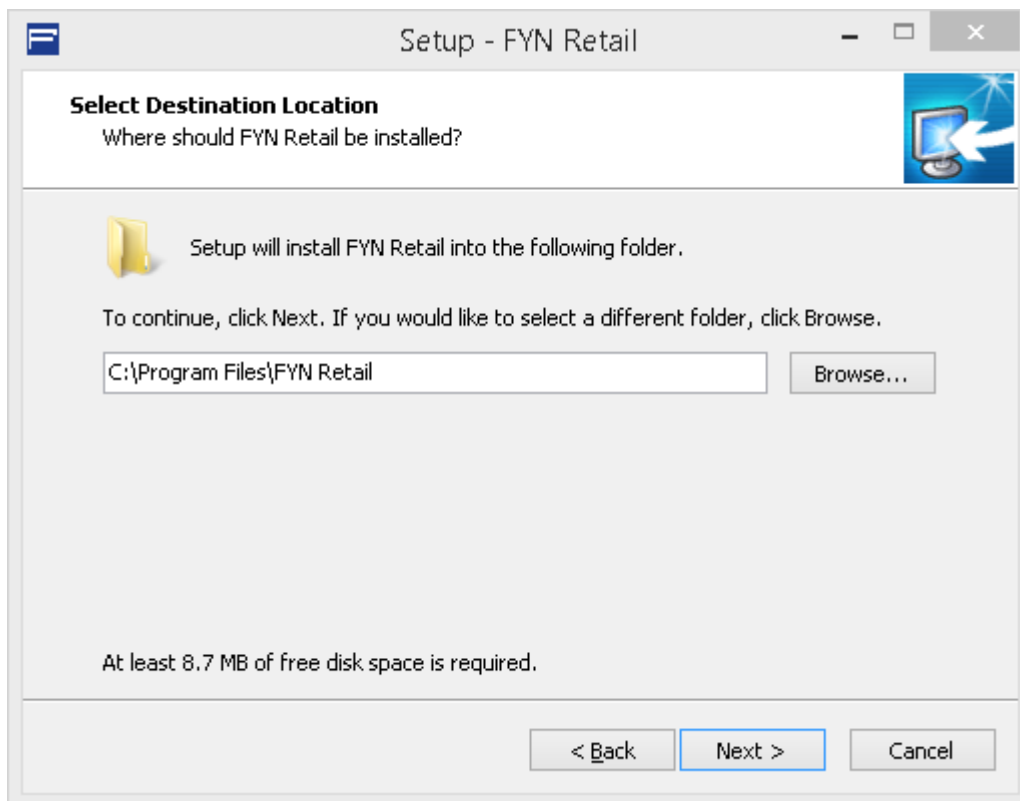
You will be asked to accept the license agreement, accept if you want to continue the installation.



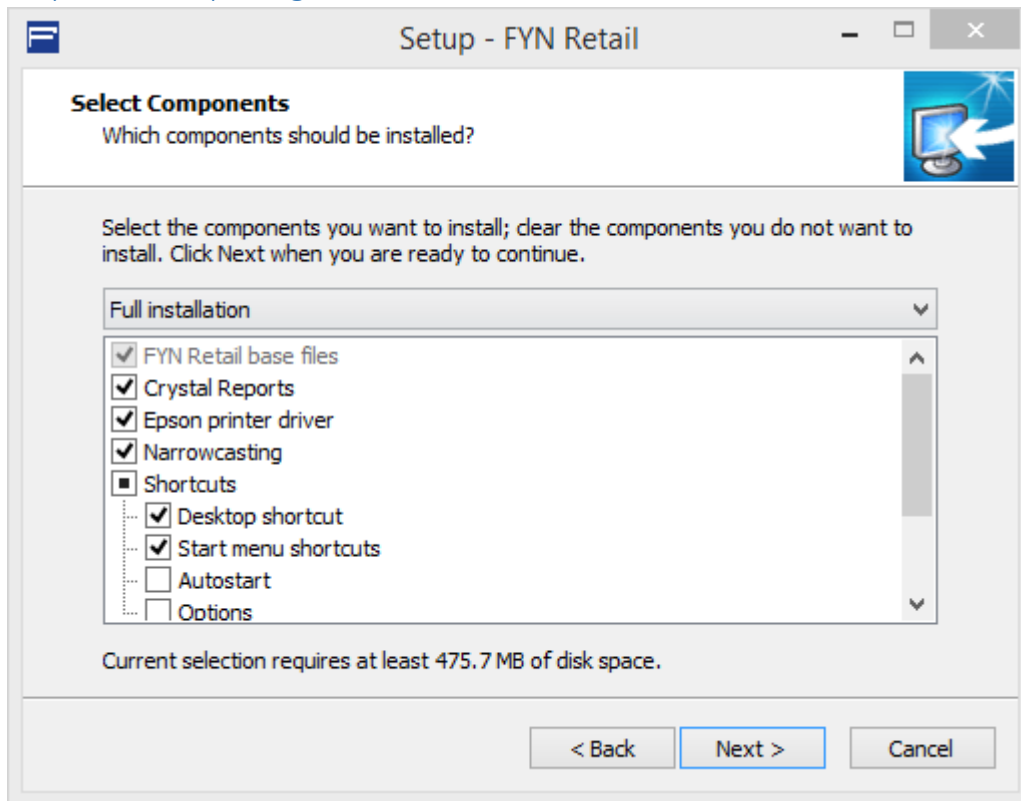
*Picture of the license agreement screen.*

### Step 1.3 : Choose an installation folder

Choose a folder where you want to install the program than click next.



## Step 1.4 : Completing installation



*Picture of the component screen*

On the component screen you have 3 options. These are as followed.

### **Full installation**

Full installation installs all the needed files so that the program works properly. If you don't know what you need than choose this option.

### **Compact installation**

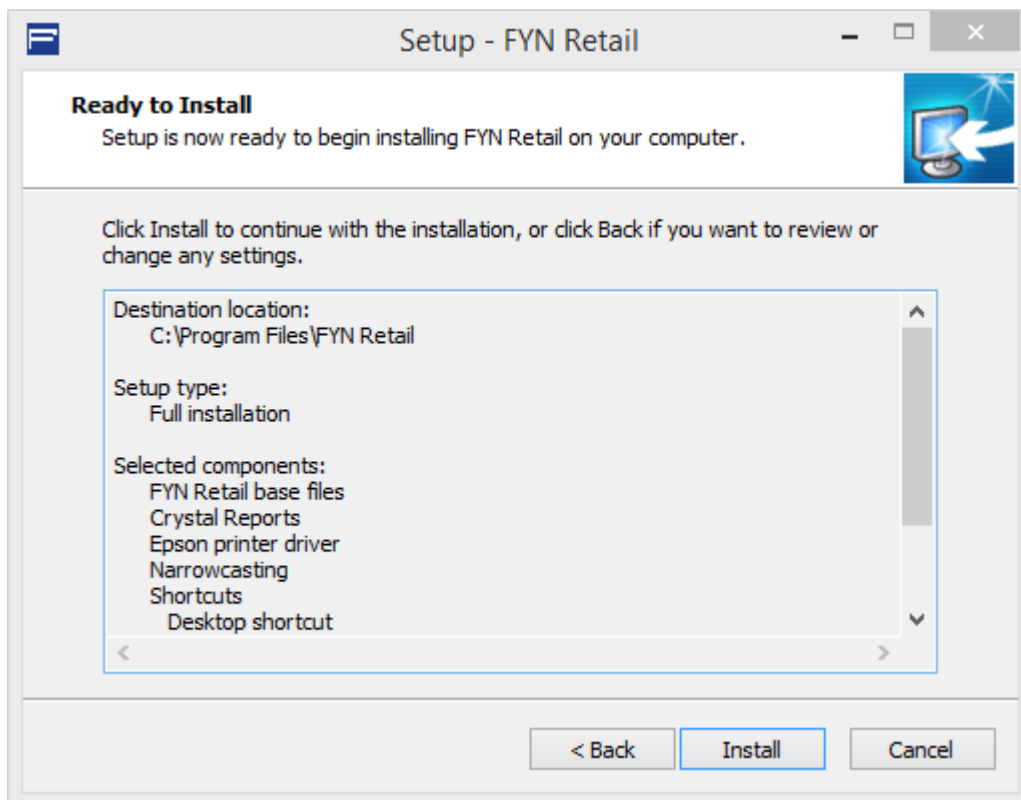
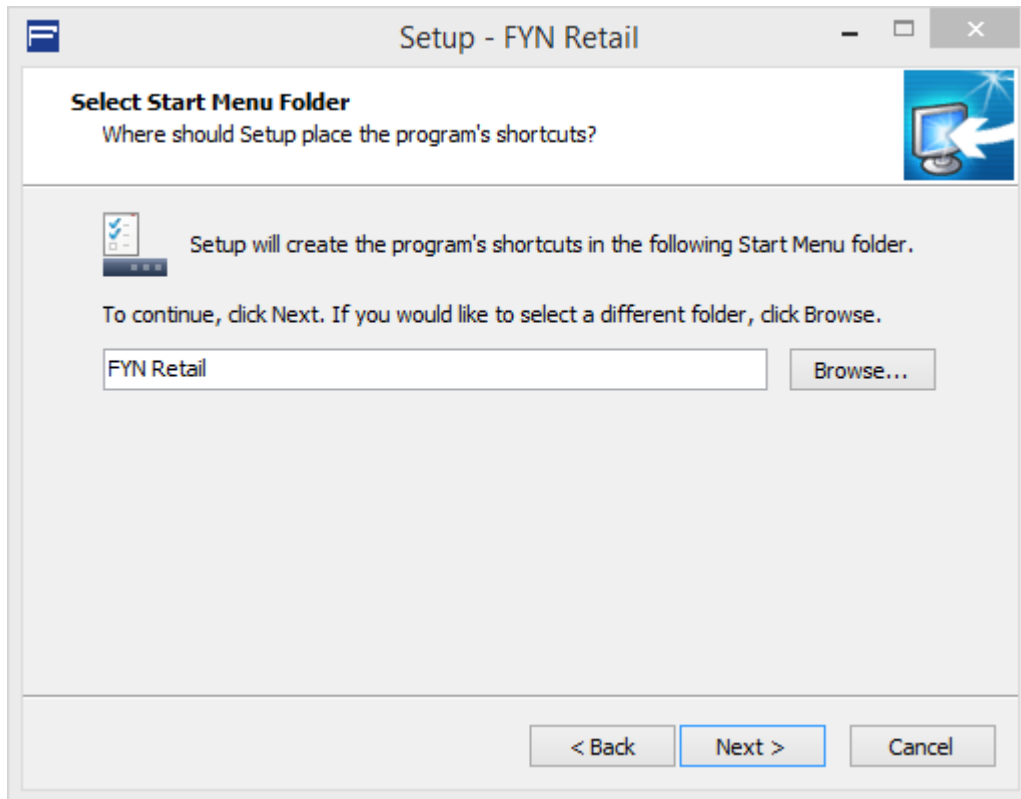
This installs only the very basics of the program and a shortcut.

### **Custom installation**

With custom installation you can manually choose which components you want installed. These are the following components you can choose from.

- Crystal Reports = Needed to print documents.
- Epson printer driver = Needed to print receipts and labels.
- Narrowcasting = Needed for the use of narrowcasting.
- Desktop shortcut = Creates a shortcut for you desktop.
- Start menu shortcut = Creates a shortcut for your start menu.
- Autostart = Starts the program when windows loads in.
- Narrowcasting installation = Makes all monitors narrowcast screens.
- Keep the program alive = Reboots the program after a crash.
- Unattended installation = Installation for a unattended pc.

After you have chosen the components you would like to install click next. Then choose a folder to save the shortcuts. Click next and then install. Wait for the installation to complete and then reboot the computer.

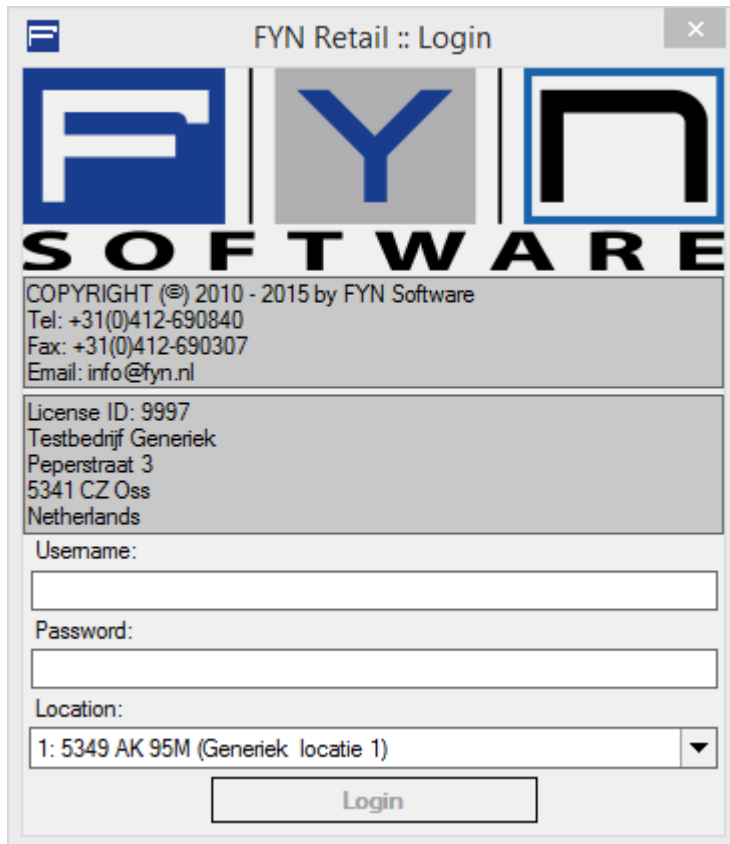


*Picture of the installation overview.*



## Step 2 : First start-up

When you first start up the program you get the following window.



For the first use the following credentials are needed.

- Username = admin
- Password = admin

You can now go to the basic guide here for the first setup of the program.

### Step 2.2 : First setup

Before you use the program it might be useful to configure the following options.

- **General / User management**
- **General / Settings / Settings / Print**
- **General / Settings / Settings / Narrow casting**
- **General / Settings / Settings / General**

If you don't know how to configure the following options you can always go to the help subjects. You can find these by clicking help at the top right corner of the program and clicking help subjects.